

DATE: 24/3/2026

PRODUCT NAME: MORRISON

ALLOCATION: AUS & NZ GAL

IMAGE(S):



PIECES IN THIS RANGE:

PIECES	DIMENSIONS W x D x H			LOUNGE COVERINGS
Rocker Recliner	960	1000	1090	Available in all Blue Factory Leather and Fabric covers.
Power XR+	930	1000	1070	
3 Seater	1930	990	1080	
2 Seater	1420	990	1080	

Construction

- Seat – Foam
- Back – Fibre
- Frame Hardwood and Plywood
- Base – Mahogany as standard
- Handle – Mahogany as standard

USP:

- Ultra plus comfort seating
- Supportive high back
- Industry leading warranties
- Classic casual style

Showcasing the latest in comfort innovation from the USA, this design puts a fresh spin on a classic favourite delivering undeniable comfort.

FEATURES:



Rocker Motion



Manual Recline



Supportive High Back

POWER XR+

Construction:

- Seat – Foam and Springs
- Back – Foam and Springs
- Frame Hardwood and Plywood

USP:

- XR+ Power SKUs offer independent back and footrest functionality
- Available in over 75+ cover options
- Industry leading warranties

Features:



Rocker Motion



Power Recline



Power Adjustable Headrest



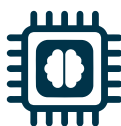
Power Adjustable Lumbar



USB Charger



Wireless Remote Control



Memory Options



Home Button

